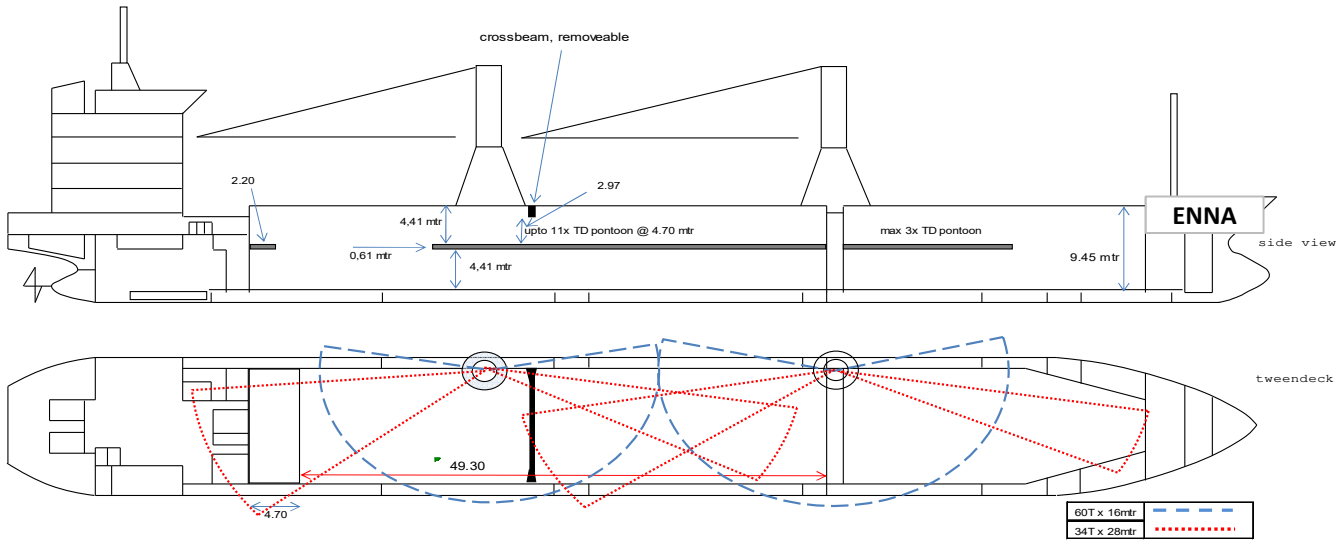


# MV Enna



## Main Data

Type	Multi Purpose Vessel, geared	IMO No.	9414199
Flag	Luxembourg	Call Sign	LXKI
Port of Registry	Luxembourg	Deck Stanchions	
Classification	100 A5, DBG DG, Multi-Purpose Dry Cargo Ship, Equipped for Carriage of Containers, Strengthened for Heavy Cargo	Cement Feeding Holes	yes
Ice Class	II (Fin,Swe)/ 100 A 5 (GL)	Grain fitted	yes
Class	DNV	ITF fitted	yes
P&I	DUPI	App B	yes
Built	2007	Bow thruster	yes
		IMO fitted	yes
		Box shaped	yes

## Dimensions

Dwat s/w	7,600/ 7,400 mt
Dwcc s/ w	7,300/ 7,100 mt
GT/ NT	4,990/ 2,648
Airdraft	33 mt
Length o. a.	118,55
Length b.p.	112.15 m
Breadth max.	15.20 m
Moulded Depth	8.45 m
Draft s/w	7.05/ 6.9 m
WLTOHC ballast	7.2 m
WLTOHC laden	3,80 m
TPC	16 mt

## Holds & Hatches

Number of holds	2 holds
Hold/ Hatch 1	28.27 m x 12.65 m / 5.50 m x 9.45 m
Hold/ Hatch 2	53.95 m x 12.65 m x 9.45 m
Hold 1	2,950 cbm/ 104,200 cbft
Hold 2 ( with TD inside)	6,050 cbm/ 213,700 cbft
Total	9,000 cbm/ 317,900 cbft
Hatchcovers	pontoon type
Ventilation	3 - 4 air changes per hour
Tanktop strength	15 mt/ sqm
Hatch strength	1,75 mt/ sqm
Tweendeck strength	3,50 mt/ sqm
Moveable TD	yes (12 pieces/ 8 pieces for bulkhead)

## Cranes

Number of Cranes	2
SWL	60 mt/ 40 mt/ 34 mt
Max. Outreach	16 m/ 25 m/ 28 m

## Grabs

nil

All details to be considered as about, given in good faith but without any guarantee.